



ADANI DATA CENTER

PROJECT DETAILS:

- Project Location: India
- Project Type: Infrastructure
- Project Area: 42,961 sq.m
- Trades Covered: LOD 400 & 500 Modeling Architecture
- Software Used: Revit, AutoCAD, Navisworks

WHAT WE DID

1. Conversion of PDF Drawings to BIM Models

The project began with converting the client-provided PDF files into clean and structured BIM models. Our team interpreted all architectural details with precision, ensuring the digital model was fully aligned with the original design intent.

2. Architectural Model Upgradation

BimOffis updated and enhanced the integrated architectural model based on revised drawings and project requirements. All modifications were executed to maintain consistency, accuracy, and compliance with the client's updated design standards.

3. Detailed BIM Modeling (LOD 400 & LOD 500)

- Advanced BIM modeling was carried out for various architectural elements, including: Floor Plans, Fire-Rated Doors, Rolling Shutters, Signage Elements, Ceiling Plans, Mesh Walls, Trap Doors
- These elements were developed at LOD 400 and LOD 500, providing a high level of detail suitable for fabrication, installation, and facility management.

4. Clash Detection and Resolution

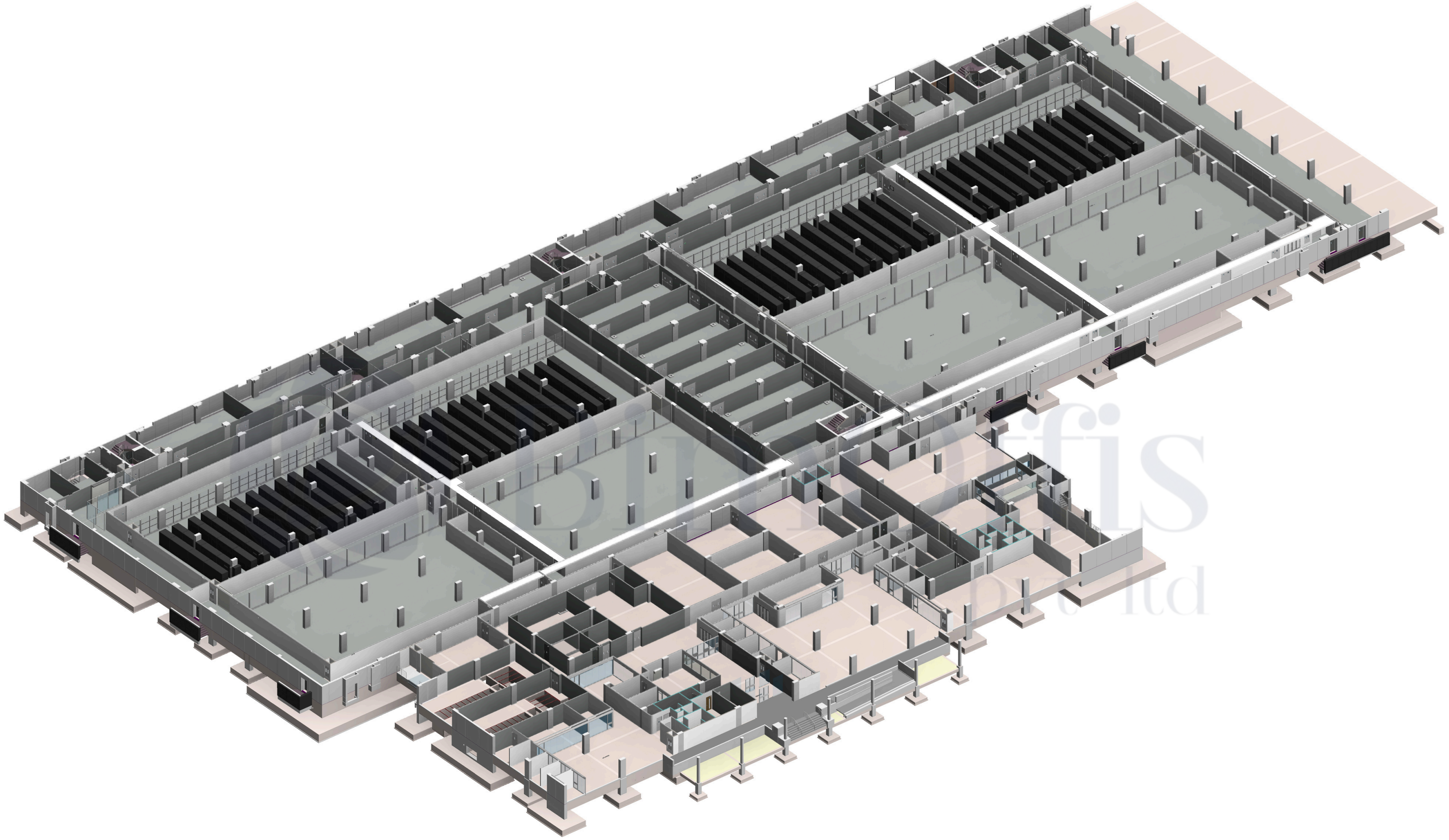
A thorough clash detection process was conducted to identify conflicts within the architectural model and across other disciplines. BimOffis resolved all clashes proactively, delivering a fully coordinated, clash-free model ready for project execution.

PROJECT CHALLENGES

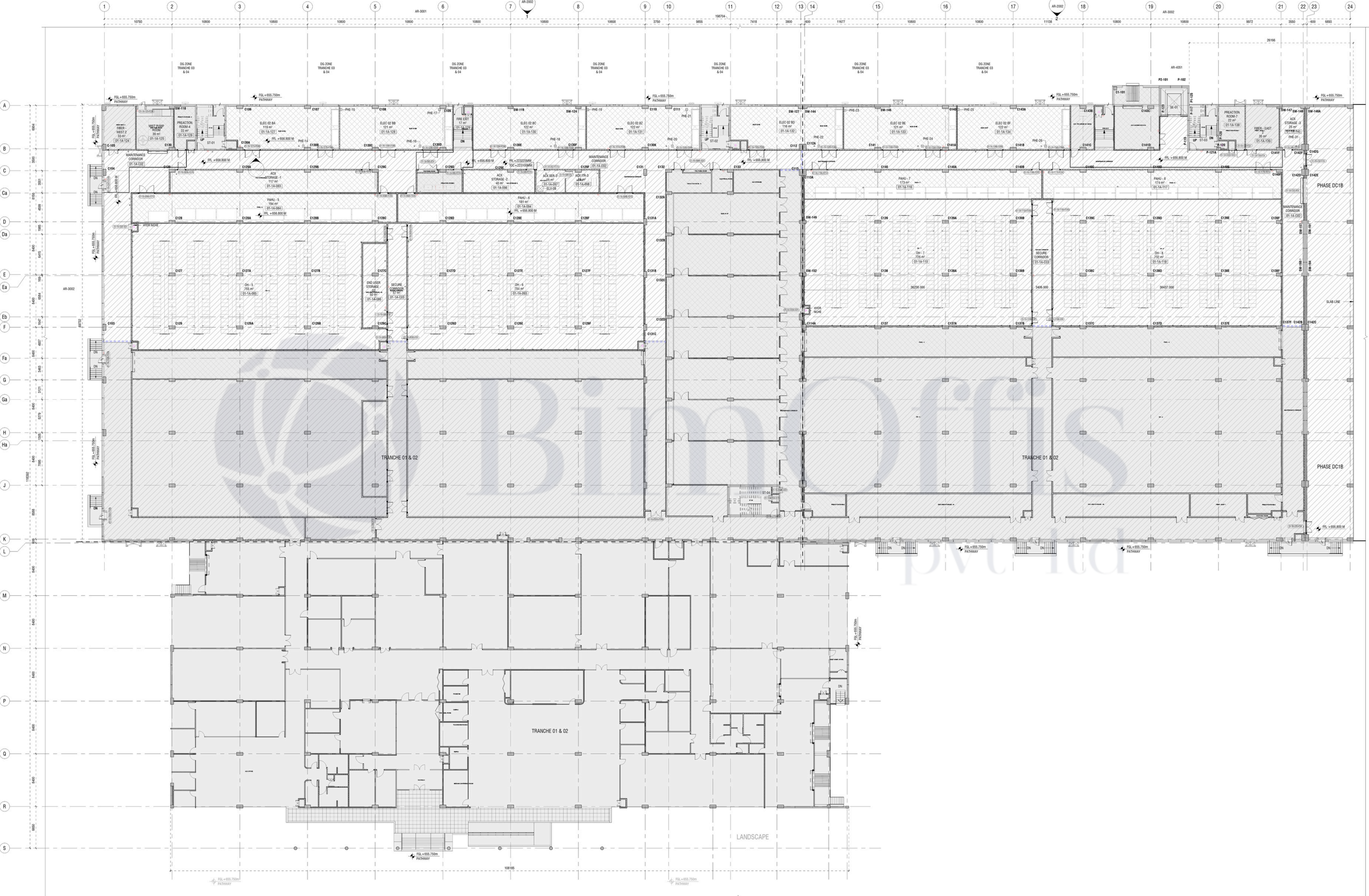
- 1. Incomplete and Unclear PDF Inputs:** Many client-provided PDFs lacked clear measurements and annotations, making accurate BIM modeling difficult.
- 2. Frequent Design Revisions:** Continuous architectural updates during the project required the model to be regularly revised and kept consistent.
- 3. Interdisciplinary Coordination Gaps:** Architectural, Structural, and MEPF models had alignment and coordination issues, resulting in recurring clashes.
- 4. High LOD Requirements (LOD 400–500):** Modeling detailed elements such as fire-rated doors, rolling shutters, mesh walls, and trap doors required high precision and validation.
- 5. Tight Project Deadline:** The delivery timeline was challenging, demanding optimized planning and faster coordination.

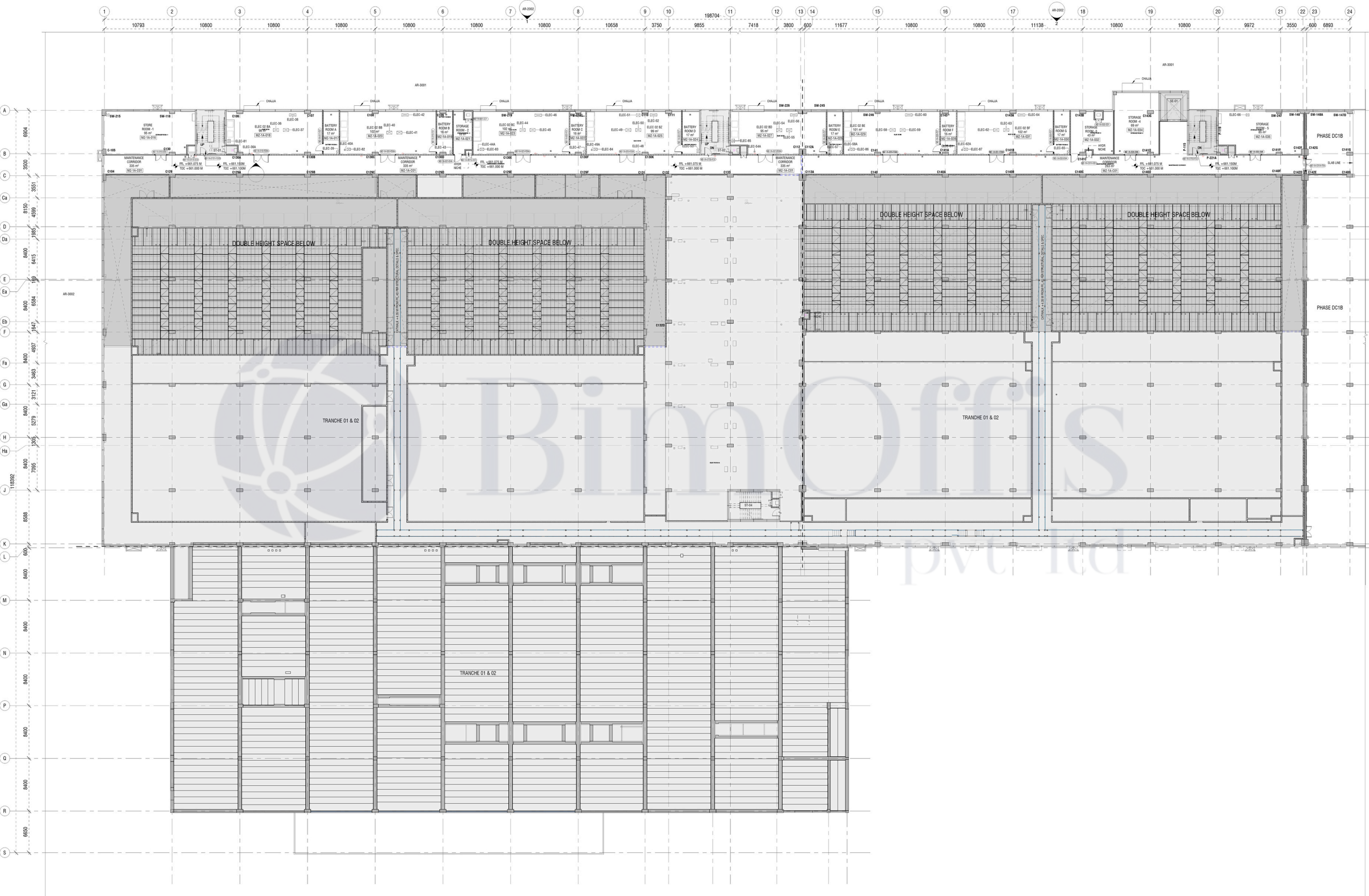
PROJECT SOLUTIONS

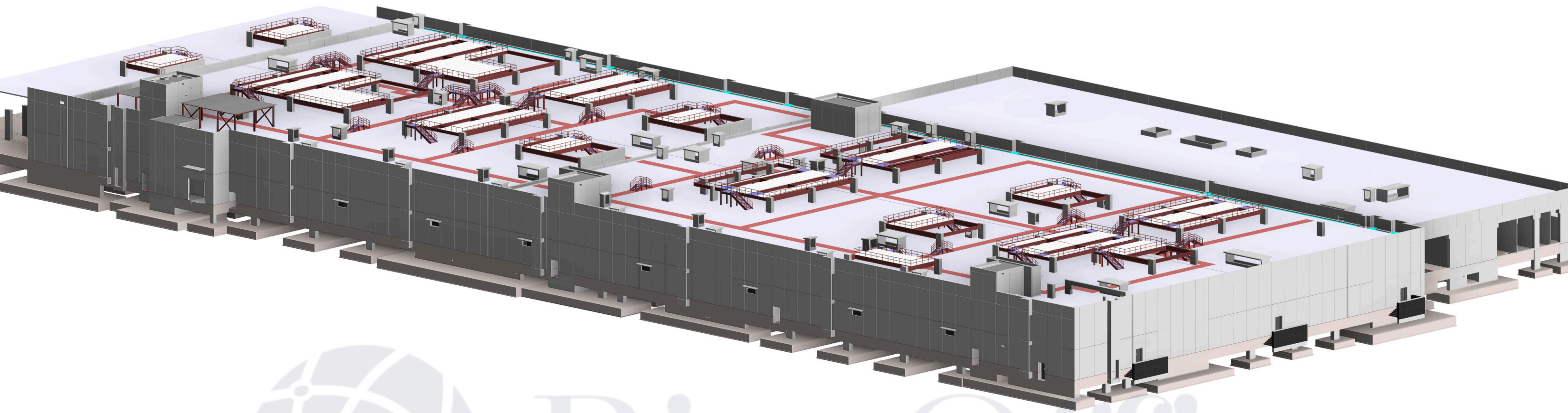
- 1. Clarified Inputs Through Client Coordination:** Conducted regular discussions with the client to clarify missing or unclear areas in the PDFs and adopted a reference-based modeling approach.
- 2. Systematic Model Revision Workflow:** Implemented a structured revision process to track changes and ensure the integrated architectural model remained up-to-date.
- 3. Effective Multidiscipline Coordination:** Organized coordination meetings with Structural and MEPF teams to resolve alignment issues and eliminate clashes early.
- 4. High-Accuracy BIM Modeling:** Developed detailed BIM models (LOD 400 & 500) for floor plans, fire-rated doors, rolling shutters, signages, ceiling elements, mesh walls, and trap doors.
- 5. Optimized Project Execution:** Streamlined internal workflows, allocated dedicated resources, and performed continuous quality checks to meet the tight deadline.



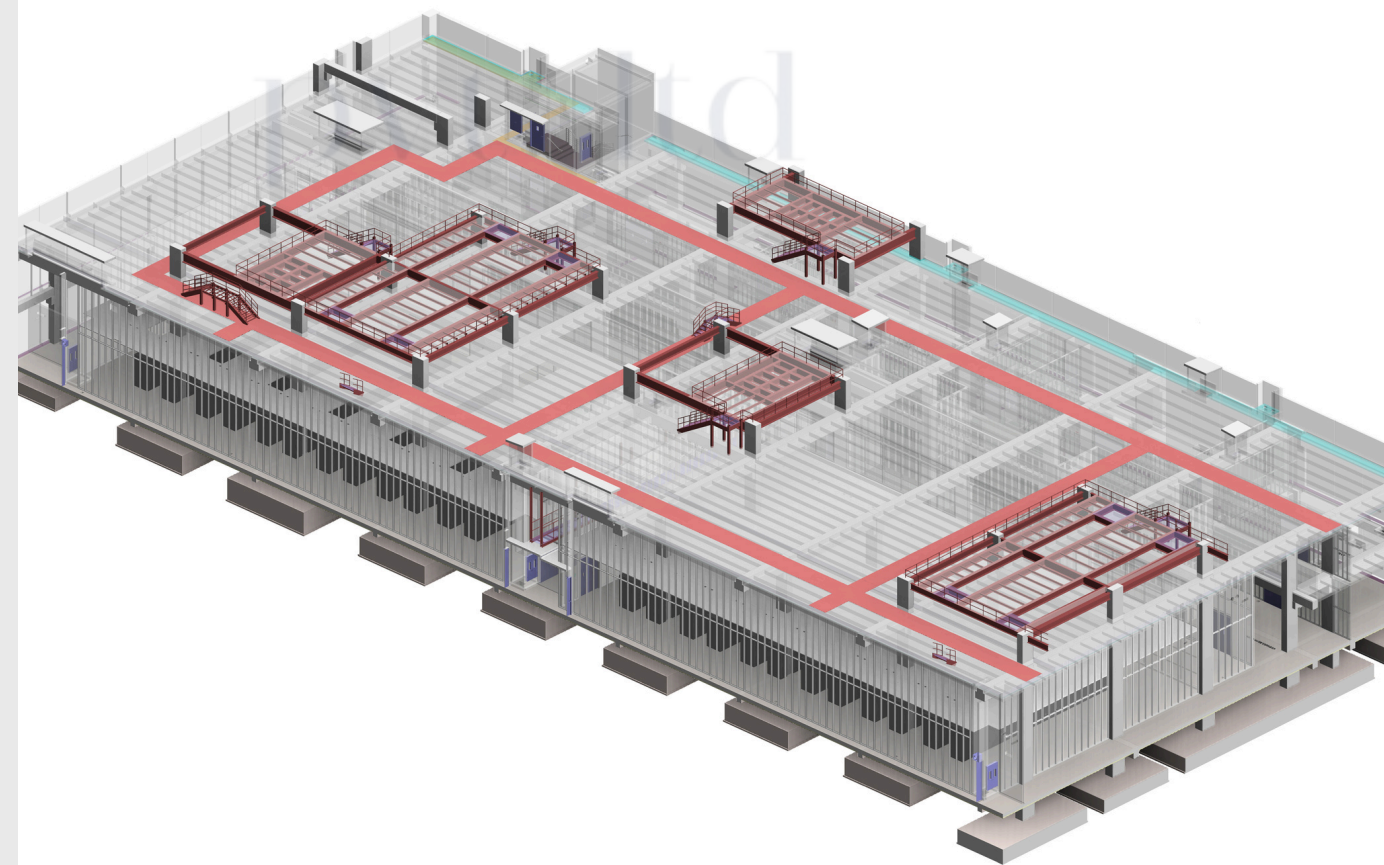
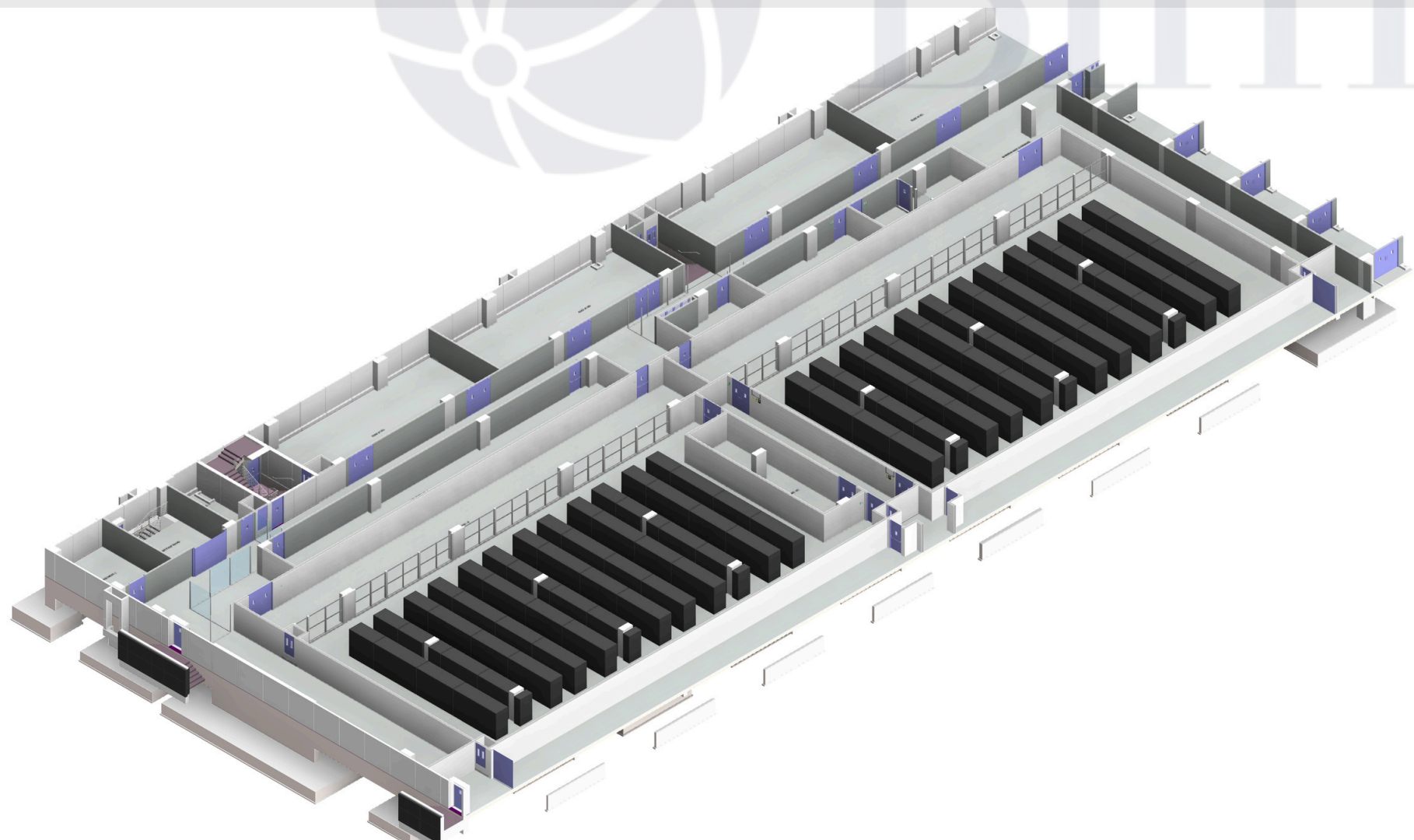
DATA CENTER 3D







BimOffis



THANK YOU

Let's Connect With Us!

Email: contact@bimoffis.com

Website: www.bimoffis.com



INDIA

Contact Number: (+91) 95868 77788, (+91) 70168 37252

Address: 507, Times Square Arcade 1, Thaltej – Shilaj Rd,
opp. Rambaug, Thaltej, Ahmedabad, Gujarat
380059



USA

Contact Number: (+1) 623-250-6919, (+91) 95868 77788

Address: 25 Doris Dr Scarsdale, NY 10583, USA